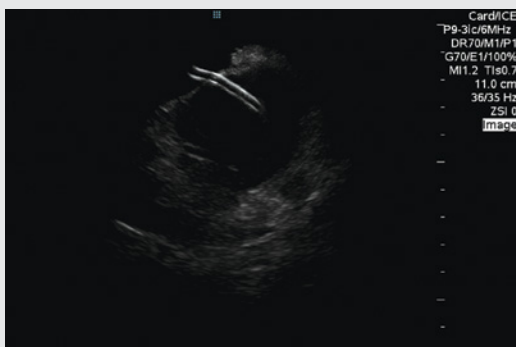


ViewMate™  
Ultrasound Console



# EXCEPTIONAL CARDIAC IMAGING IN A COMPACT CONSOLE



## Rapidly view cardiac structure, blood flow and devices within the heart

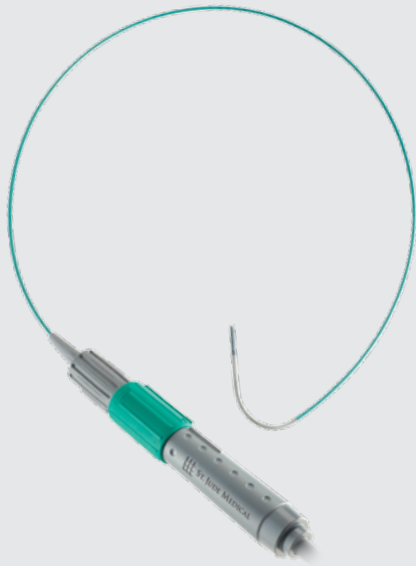
Outstanding image quality provides clear visualization of cardiac anatomy and devices.

- Software-based architecture allows for rapid image optimization.
- Enhanced far-field resolution enables assessment of distal structures such as the left pulmonary veins, left atrial appendage and left ventricle.
- Low noise and decreased artifact provide clear views of anatomic landmarks and devices.

## Gain workflow advantages with enhanced functionality

- Rapid boot-up reduces time to begin procedures.
- 1.5 hour battery pack eliminates the need to power down when moving the system.
- Software-based architecture allows for easy installation of clinically impactful upgrades.
- Networking compatibility with most hospital PACS servers.
- Ergonomically designed control panel to enable easy control and case annotation.





### Streamline procedures single-handedly

The ViewFlex™ Xtra ICE catheter provides seamless maneuverability, allowing physicians to focus more on the procedure and less on catheter manipulation to enhance workflow efficiency.

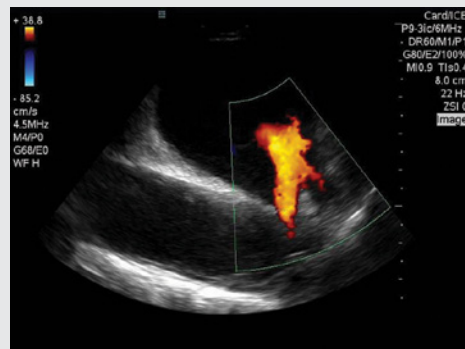
- Ergonomic handle with auto-lock steering allows for single-handed operation, which can minimize catheter repositioning.
- Extended catheter reach on the distal curve assists in right ventricular access.
- Four-way tip deflection enables optimal viewing planes.
- Integrated connector streamlines setup by eliminating the need for a sterile sleeve.

### Increased productivity with a fully featured system

The ViewMate™ ultrasound console features comprehensive imaging capabilities, which can eliminate the need for additional imaging equipment to be transported to the lab.

- Multi-transducer port connects three probes simultaneously, which allows for quick selection of transducer based on clinical need (ICE, Transthoracic, Transesophageal and Vascular).
- Choose multiple imaging modes (2-D, M-Mode, Pulsed Wave, Continuous Wave\*, Color Doppler, Tissue Doppler Imaging\*).

\* Not available with ICE



### ViewMate™ Ultrasound Console Specifications

Feature	Specification
Dimensions	62 H x 20.1 W x 28.2 D (in) 157 H x 51 W x 72 D (cm)
Weight	147 lb (66 kg)
Display	19 in (48 cm) 1280 x 1024 Pixel Resolution Mounted on articulating arm
Architecture	> 100,000 dynamic channels per frame Frame rate: > 1,000 fps Boot time: < 30 seconds
Power	100-240 VAC, 50-60 Hz Cart Battery with 2 hour capacity

### ViewFlex™ Xtra Catheter Specifications

Feature	Specification
Catheter size	9 F
Introducer size	10 F
Insertable length	90 cm
Tip deflection	Anterior/Posterior, Left/Right ± 120 degree flexion
Transducer type	64 element phased array
Viewing sector	80 degrees

#### Rx Only

**Brief Summary:** Prior to using these devices, please review the Instructions for Use for a complete listing of indications, contraindications, warnings, precautions, potential adverse events and directions for use.

Unless otherwise noted, ™ indicates that the name is a trademark of, or licensed to, St. Jude Medical or one of its subsidiaries. ST. JUDE MEDICAL and the nine-squares symbol are trademarks and service marks of St. Jude Medical, Inc. and its related companies. © 2014 St. Jude Medical, Inc. All Rights Reserved.

#### St. Jude Medical Inc.

Global Headquarters  
One St. Jude Medical Drive  
St. Paul, MN 55117  
USA  
T +1 651 756 2000 | F +1 651 756 3301

#### St. Jude Medical S.C., Inc.

Americas Division  
6300 Bee Cave Road  
Bldg. Two, Suite 100  
Austin, TX 78746  
USA  
T +1 512 286 4000 | F +1 512 732 2418

#### SJM Coordination Center BVBA

The Corporate Village  
Da Vincilaan 11-Box F1  
B-1935 Zaventem, Belgium  
T +32 2 774 68 11 | F +32 2 772 83 84

#### St. Jude Medical Brasil Ltda.

Rua Itapeva, 538  
5º ao 8º andares  
01332-000 – São Paulo – SP  
Brazil  
T +55 11 5080 5400 | F +55 11 5080 5423

#### St. Jude Medical (Hong Kong) Ltd.

Suite 1608, 16/F Exchange Tower  
33 Wang Chiu Road  
Kowloon Bay, Kowloon  
Hong Kong SAR  
T +852 2996 7688 | F +852 2956 0622

#### St. Jude Medical Japan Co., Ltd.

Shiodome City Center 15F  
1-5-2 Higashi Shinbashi, Minato-ku  
Tokyo 105-7115  
Japan  
T +81 3 6255 6370 | F +81 3 6255 6371

#### St. Jude Medical Australia Pty, Ltd.

17 Orion Road  
Lane Cove, NSW 2066  
Australia  
T +61 2 9936 1200 | F +61 2 9936 1222

[SJMprofessional.com](http://SJMprofessional.com)