

## Excellence doesn't happen by itself.

St. Jude Medical technology is supported by a passion for customer service. This is demonstrated by highly skilled and dedicated clinical installation and support teams with consistently high marks for customer satisfaction.

TO LEARN MORE ABOUT THE WORKMATE CLARIS SYSTEM AND EXPERIENCE THE ST. JUDE MEDICAL PENCHANT FOR PARTNERSHIP, VISIT [SJMprofessional.com/WorkMateClaris](http://SJMprofessional.com/WorkMateClaris).



**Global Headquarters**  
One St. Jude Medical Drive  
St. Paul, Minnesota 55117  
USA  
+1 651 756 2000  
+1 651 756 3301 Fax

**St. Jude Medical  
Cardiovascular &  
Ablation Technologies**  
5050 Nathan Lane North  
Plymouth, Minnesota 55442  
USA  
+1 651 756 5400  
+1 651 756 5470 Fax

**St. Jude Medical  
Implantable  
Electronic Systems**  
15900 Valley View Court  
Sylmar, California 91342  
USA  
+1 818 362 6822  
+1 818 364 5814 Fax

**U.S. Division**  
6300 Bee Cave Road  
Bldg. Two, Suite 100  
Austin, TX 78746  
USA  
+1 512 286 4000  
+1 512 732 2418 Fax

**SJM Coordination Center BVBA**  
The Corporate Village  
Da Vincilaan 11 Box F1  
1935 Zaventem, Belgium  
+32 2 774 68 11  
+32 2 772 83 84 Fax

**St. Jude Medical Brasil Ltda.**  
Rua Itapeva, 538  
5º ao 8º andar  
01332-000 – São Paulo – SP  
Brazil  
+55 11 5080 5400  
+55 11 5080 5423 Fax

**St. Jude Medical (Hong Kong) Ltd.**  
Suite 1608, 16/F Exchange Tower  
33 Wang Chiu Road  
Kowloon Bay, Kowloon  
Hong Kong SAR  
+852 2996 7688  
+852 2956 0622 Fax

**St. Jude Medical Australia Pty, Ltd.**  
17 Orion Road  
Lane Cove, NSW 2066  
Australia  
+61 2 9936 1200  
+61 2 9936 1222 Fax

[SJMprofessional.com](http://SJMprofessional.com)



**Rx Only**  
**Indication for Use:** The WorkMate Claris System is indicated for use during electrophysiology procedures.

Product referenced is approved for CE Mark. Device depicted may not be available in all countries. Check with your St. Jude Medical representative for product availability in your country.

**Brief Summary:** Please review the Instructions for Use prior to using these devices for a complete listing of indications, contraindications, warnings, precautions, potential adverse events and directions for use.

Microsoft and PowerPoint are either registered trademarks or trademarks of Microsoft Corporation in the United States and/or other countries. McAfee is a trademark or registered trademark of McAfee, Inc. in the United States and other countries.

Unless otherwise noted, ™ indicates that the name is a trademark of, or licensed to, St. Jude Medical or one of its subsidiaries. ST. JUDE MEDICAL and the nine-squares symbol are trademarks and service marks of St. Jude Medical, Inc. and its related companies. © 2013 St. Jude Medical, Inc. All Rights Reserved.  
100103029 Rev A 11/13





## WHAT IF YOUR EP LAB RECORDING SYSTEM WAS INTEGRATED, INTUITIVE AND EFFICIENT?

### INTRODUCING THE WORKMATE CLARIS RECORDING SYSTEM

The creation of the WorkMate™ Claris™ System reflects the St. Jude Medical commitment to provide effective, high-performance products for collecting, displaying and storing data from multiple sources within the electrophysiology (EP) lab. The comprehensive WorkMate Claris System addresses the need for integrated, intuitive and efficient management of patient data from inside and outside the lab. The system provides an intuitive display of real-time and historical data screens to allow clinicians to use one system to manage patients.

Introducing the entirely reimagined WorkMate Claris System—sending the clearest signal yet that patient care and lab efficiencies are at the hub of St. Jude Medical EP innovation.

TURNING WHAT IF INTO WHY NOT™





## Enhanced Integration

Seamless connections among multiple IT systems and platforms are designed to increase operator efficiency without sacrificing patient care.

### Patient Procedural Record Consolidation

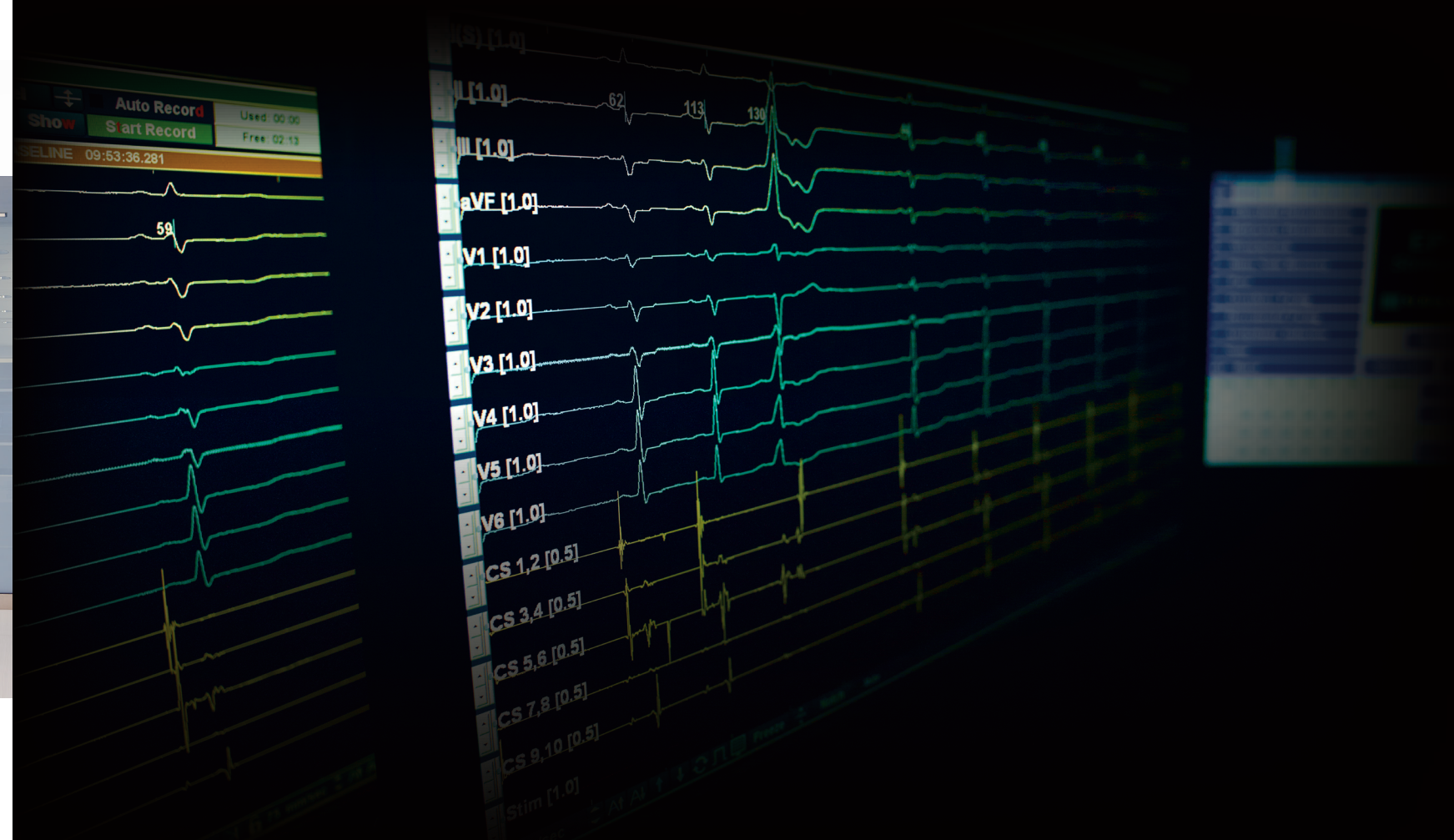
Integrating EP lab data with hospital information systems and electronic medical records provides a complete, single-procedural patient record.

### Analysis and Reporting Efficiency

Data analysis anytime from any combination of electrodes enables efficient examination of arrhythmias. Compatibility with industry-standard Microsoft™ PowerPoint™ and Microsoft™ Word programs allows for the creation of patient-case presentations and reports.

### Secure Operation

McAfee™ application control software offers improved network security.



## Signal Clarity

Unique ClearWave™ signal acquisition technology enables diagnosis with amplified confidence. With fast post-pacing recovery, high sample rate, low baseline noise and low distal ablation noise, the electrograms displayed on the high-resolution WorkMate Claris System assist with fast and accurate diagnosis.

### Exceptional Signal Display

The real-time screen of the WorkMate Claris System dedicates more than 90% of its viewing area to what matters most—high-resolution electrograms.

### Fiber-optic Technology

Fiber-optic connections mean less potential for troublesome electrical noise and improved system performance.



## Increased Efficiency

Key user interface and hardware design enhancements enable both current users and those new to the WorkMate Claris System to quickly become proficient with its setup and operation.



### Intuitive Interface

Easy-to-use graphical user interface is designed to provide simplified setup, exceptional system operation and easy visual transition from one screen to another—for both new and experienced users.

### Ergonomically Inspired Design

Ergonomic design, color-coded connections and snap-in connectors deliver long-term durability that enables the unit to withstand repeated usage.



### Integrated Stimulator

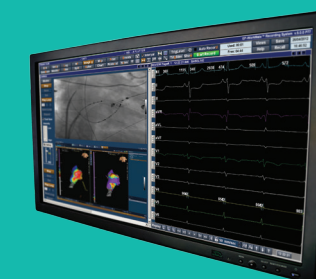
The EP-4™ Cardiac Stimulator is the only stimulator capable of functioning as a standalone system or as a fully integrated component of the WorkMate Claris System, sharing a single keyboard.

# ONE PATIENT RECORD

The WorkMate Claris System consolidates data from EP lab procedural records and hospital information systems into a single patient record for use during the procedure and for sharing with other hospital information systems.

### Image Capture

The WorkMate™ ImageSync™ Module facilitates the correlation of images from a variety of imaging modalities with recorded electrograms directly through the WorkMate Claris System and incorporates them into final case reports.

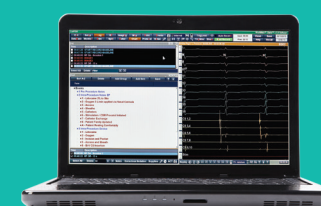


### Patient Monitoring

The WorkMate™ Scribe™ Module allows a secondary user to simultaneously monitor the patient's vital signs, record patient monitoring and charting information, and perform signal analysis—all independent of the primary WorkMate Claris System workstation.

### EnSite™ Velocity™ System Integration

The EnSite™ Derexi™ Module provides seamless communication between the EnSite Velocity System and the WorkMate Claris System, allowing automatic sharing of patient demographic information and displaying of mapping data in both systems. Less time is spent replicating data so more time can be spent on patient care.



### HL-7 Networking and Remote Review Clients

The WorkMate™ Unity™ Module empowers users to seamlessly store and retrieve patient and procedure data on the hospital PACS, hospital file server or other HL-7 compliant data stores within the hospital. It can be tailored to the needs of individual labs and comes with installation and integration support.